

Pneumatic Back Gouger Tool Instructions



WARNING!

To reduce risk of injury, anyone using, installing, repairing, maintaining, changing accessories on, or working near this tool **MUST** read and understand these instructions before performing any such task.

DO NOT DISCARD—GIVE TO OPERATOR

Table of Contents

Safety Instructions	3
Service Instructions	4-6
Precautions for Using Protection Cover	7
Guard Installation	8-10
Blade Installation	11-12
Cutting Application	13
Tool Breakdown and Spare Parts List	14-15

Warning !

Tool operators must be familiar with the operating instructions before using this Pneumatic Back Gouger Tool.

This tool, its attachments, and accessories must only be used for the purpose for which they were designed.

For product liability, safety and warranty reasons any modification to the tool, its attachments or accessories must

Safety Instructions

Avoid accidents when using the tool

- Always wear approved eye protection to prevent eye injury due to spark, chips or wheel fragments.
- Place BOTH hands on handles when operating tool to prevent injury.
- Secure loose hair or clothing to prevent injury to self.

Avoid long term harmful effects when using the tool

- Wear ear protection to prevent gradual loss of hearing due to exposure to high noise levels.
- Reducing time of exposure to vibration from tool may prevent possible harm to hands and arms.
- Use proper ventilation during operation to avoid dust and fumes.

To prevent personal injury and reduce damage to tool or working surface:

- Before making any adjustments to the tool (e.g. changing an accessory), ensure the air supply is disconnected.
- Check the free speed of the tool at regular intervals and when the tool is serviced. This check should be carried out with the blade detached (*the maximum permissible speed as marked on the tool must not be exceeded*).
- The cutting blade must be approved for the rated speed of the machine.
- Regularly check hose, hose fitting and clamp conditions to avoid the risk of a whipping hose.
- The exhaust air is to be directed away from operator (and those close to operator) and from the work piece.

PLEASE NOTE: Pneumatically power tools are not generally insulated for coming into contact with electric power sources.

PLEASE NOTE: To prevent injury and property loss from fire, use non-sparking process.

Operating & Service Instructions

Installation

It is recommended that a minimum length of 300mm of flexible hose for compressed air is inserted between a vibrating tool and the quick-action coupling.

Air Quality

- For optimum performance and maximum machine life it is recommended the use of compressed air with a maximum dew point of +50°F.
- Use of a separate air filter, regulator and lubricator is recommended such as an Eagle Group AFRL device. This filter removes solid particles larger than 15 microns and also removes more than 90% of liquid water. The filter must be installed as close as possible to the machine/equipment and prior to any other air preparation unit.

Handling the Tool Correctly

- Before using the tool, check the trigger safety lock making sure tool stops when letting go of the trigger. **NOTE:** *Wheel will continue to run for a period of time after the trigger has been released.*
- Ensure the work piece is properly supported, or fixed, before operating the tool.
- When using the tool for cutting, ensure the workpiece is properly supported and does not jam the wheel. The slot must remain constant or become wider during operation.
- If wheel is jammed when cutting, shut off airpower and ease wheel free. Ensure the wheel is not damaged before continuing operation of the tool.
- Ensure sparks from the process do not cause fire; always protect eyes and ears by wearing protective glasses and hearing protection.
- Always disconnect the tool from power/air supply before changing wheel or servicing the machine.
- In the instance the energy supply is interrupted, release the trigger immediately.
- Always keep tool in a dry and clean place when not in use.

Maintenance

Rust protection and internal cleaning

Water in the compressed air flow, dust and wear particles can cause rust and sticking of vanes, valves etc.

Flushing the running tool with a few drops of air motor oil (Eagle Group AM-Oil) will reduce the chances of rust and debris build up while maintaining lubrication of the motor.

Lubrication

The machine is fitted with an angle gear that is lubricated with a semi-fluid grease to ensure good wear resistance. To avoid overfilling, which could result in a rise of temperature and damage to seals, there is no lubrication nipple. Instead, the grease should be changed after approximately 200 running hours by removing the grease access point cap with the 4 mm wrench included with the tool. Do not over-lubricate the angle head while adding grease. Lubricating grease should be added only to a point where it is visible at the bottom end of the hole.

For accurate lubricating properties – use high-quality grease properly, (for example, Gradus S2 V100 Gradus S2 V220 2 , Morlina S2 BL 10 or equivalent).

Preventative Maintenance

For preventative maintenance, the grease in the angle gear should be changed after approximately 200 hours of operation. Lubrication should be performed by competent personnel during regular preventative maintenance to maintain optimum performance.

Check the entire tool regularly at six-month intervals. Tools operating under heavy duty service conditions, or exhibiting signs of poor operation, should be taken out of service more frequently for inspection.

The strainer at the air inlet should be cleaned frequently to prevent clogging and decreased capacity.

It is important that only a trained, competent Air Tool Service Technician handle the speed governor within the tool. Incorrect service technique may cause it to lose function.

Always verify the free speed of the tool after service with the blade removed and a tachometer measuring the output shaft speed.

Ergonomic Guidelines

Consider the workstation on general ergonomic guidelines to identify areas for improvement in posture, component placement or work environment.

- Avoid work positions above shoulder level or with static holding during assembly operations.
- When working above shoulder level, reduce the load on the static muscles by reducing the weight of the tool by using torque arms, hose reels or weight balancers. Reduction of the load on the static muscles can be achieved by holding the tool close to the body.
- Avoid extreme arm or wrist postures, particularly for operations requiring a degree of force.
- Use appropriate lighting for the work task.
- Use dust extraction systems and mouth protection masks in dusty environments.

Spare Parts

Replacement parts must be ordered with appropriate part number – see breakdown of tool.

The use of other than genuine EAGLE Group replacement parts may result in decreased tool performance and increased maintenance and will invalidate all warranties.

Warranty

EAGLE GROUP products are covered by a 1-year Limited Warranty against defects in materials and/or workmanship.

All warranty claims must be submitted with written documentation to an authorized Eagle Group Service Center.

Contact the EAGLE GROUP sales representative within your area for further details

Tool Guard Cover

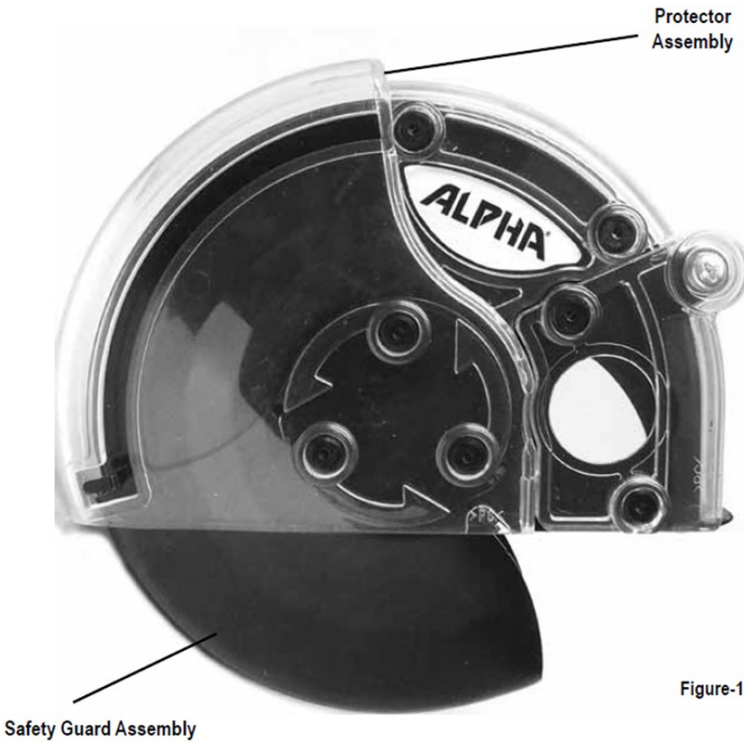


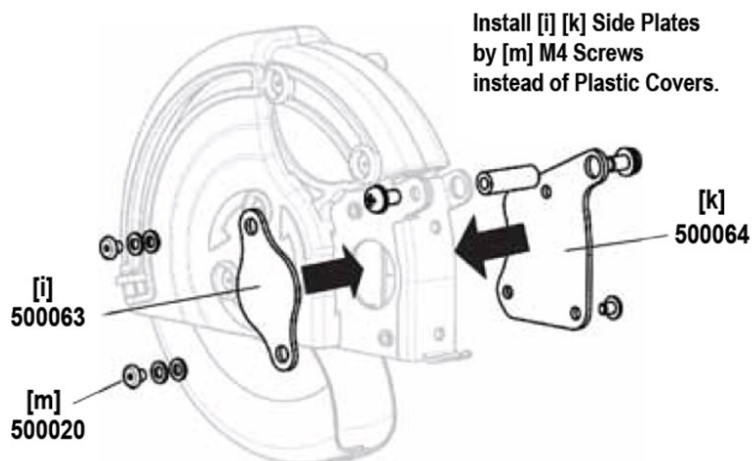
Figure-1

Precautions for using Protection Assembly Cover

- Cover is designed for safety in metal cutting of ferrous materials such as metal studs, pipe, aluminum, cast iron and angle iron.
- Be sure to wear protective goggles, dust mask, protective foot wear, earplugs and other protective equipment when working with tool.
- Confirm blade does not touch the inside of the protection cover.
- Keep cover away from gasoline, thinner, petroleum and paraffin.
- Always check protection cover for damage, cracks or deformation before starting work. Do not use the cover if it is damaged, cracked or bent as this could cause injury.
- Ensure that the protection cover is securely attached

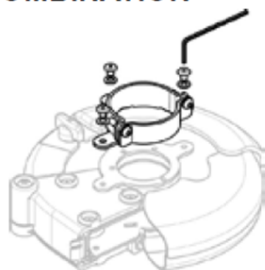
Failure to secure the Protection Cover can cause severe injury and/or product damage

Step 2



INSTALLING THE CONNECTOR & THE COMBINATION FLANGE, LOCKNUT & SPACER

1. Choose the proper Connector for the Grinder.
(See below)

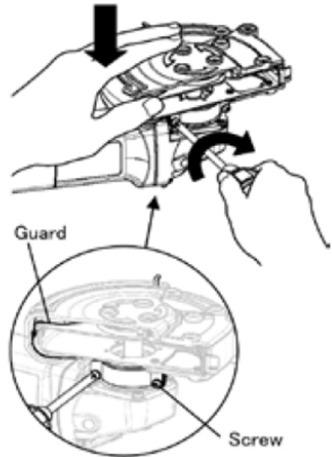


INSTALLING THE CONNECTOR & THE COMBINATION FLANGE, LOCKNUT & SPACER (CONT'D)

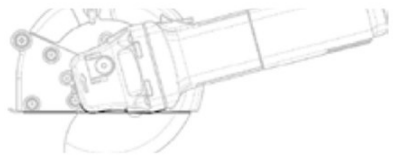
WARNING!

Be sure to turn off the grinder and remove the plug from the electrical outlet before installation.

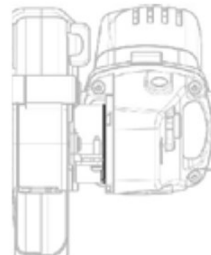
2. Open the guard of the spark protection cover and attach to the Grinder by tightening the screws on the Connector.



3. Adjust the angle of the Grinder so that it sits flat on the workpiece.

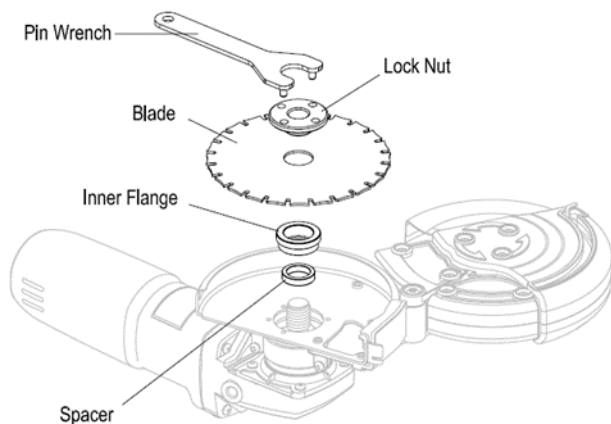
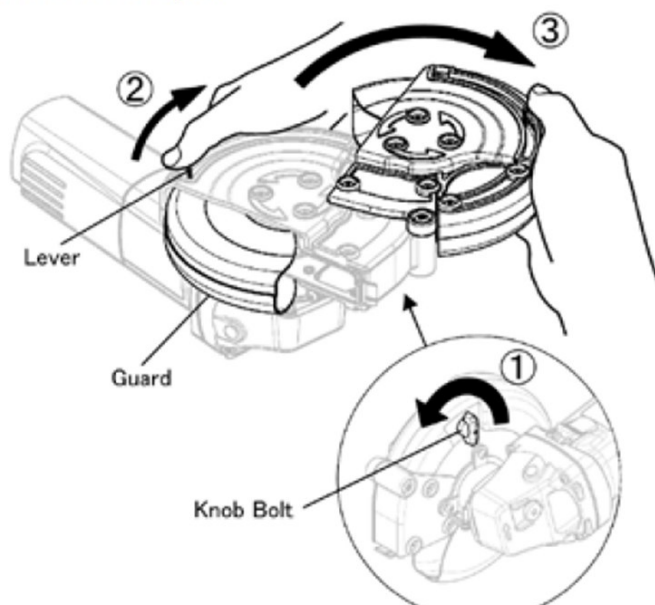


4. Tightly secure the Spark Collection Cover flush against the grinder.



INSTALLATION OF BLADE

1. Loosen the Knob Bolt to open the cover.
2. Press down on Lever to release.
3. Slide protector cover open.



4. Set the blade with ring and base Flange, then tighten the wheel nut.

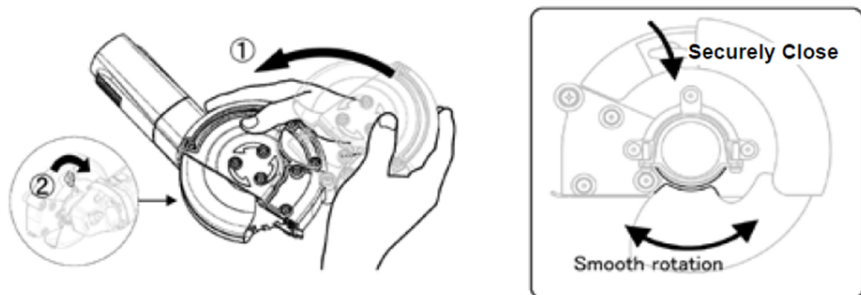


Figure-13

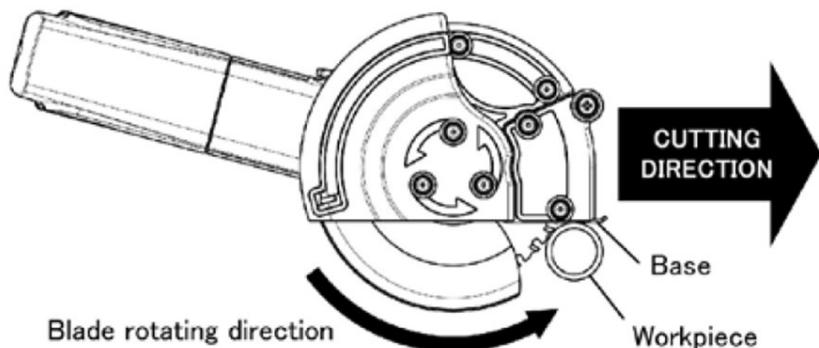
5. Close Main Unit and tighten Knob Bolt.

⚠ WARNING!

Confirm the Guard is moving smoothly

CUTTING APPLICATION

CUTTING



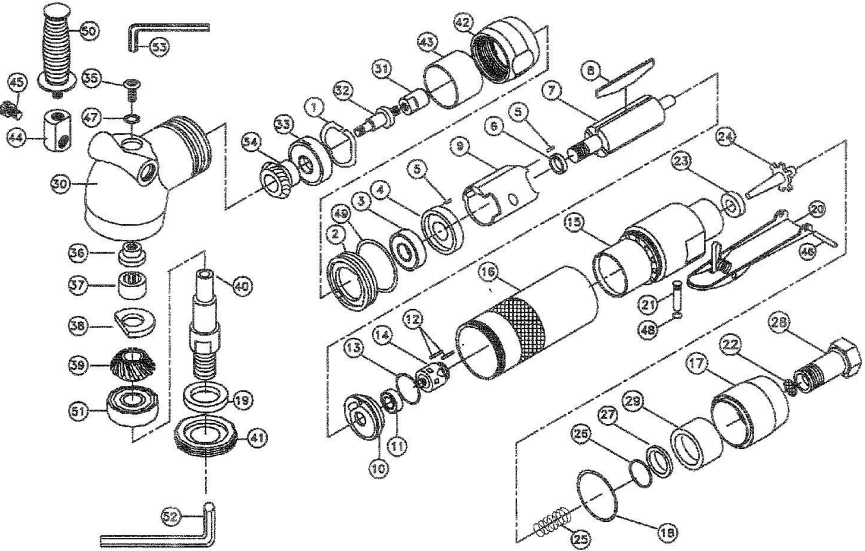
1. Turn on the switch of the grinder
2. Set the base on workpiece
3. Slowly push the grinder forward and start cutting

⚠ WARNING!

- DO NOT contact the rotating Blade to the workpiece directly. (Securely set the Base on workpiece first)
- Confirm the direction of cutting and Blade rotation.
- Hold the workpiece with clamping devices

5G-10125 BACK GOUGING PNEUMATIC SAW

EXPLODED VIEW



PARTS LIST — FOR REFERENCE ONLY

Index Number	Part Number	Description	Qty.	Index Number	Part Number	Description	Qty.	Index Number	Part Number	Description	Qty.
1	12811	Wave Spring	1	20	12828	Safety Lever Assembly	1	39	128A10	Bevel Gear	1
2	12812	Adapter	1	21	12829	Valve Stem	1	40	128AG11-5/8"	Spindle	1
3	982-200-0	Bearing (6200)	1	22	12830	Screens	1	41	128A12	Retainer	1
4	12815	Front Bearing Plate	1	23	12831	Valve Seat	1	42	128A13	Lock Ring	1
5	12816	Pin 2 x 6	2	24	12832	Tip Valve	1	43	128A14	Spacer	1
6	12817	Spacer	1	25	12833	Spring	1	44	128A19A	Adapter	1
7	12818	Rotor	1	26	12834	O-Ring (S20)	1	45	128A19B	Screw M10 x 1.5 x 25L	1
8	12819	Blade	4	27	12835	Spacer	1	46	96108	Roll Pin 3 x 25L	1
9	12820	Cylinder	1	28	12836	Inlet	1	47	83725	P5 O-Ring	1
10	12821	Rear Bearing Plate	1	29	12837	Felt	1	48	891114	O-Ring (2.9 x 1)	1
11	982-013-0	Bearing (606ZZ)	1	30	128A01	Angle Housing	1	49	08113	O-Ring (AS027)	1
12	12823	Pin 2.5 x 14	2	31	128A02	Coupling Insert	1	50	41114	Side Handle	1
13	12824	Gasket	1	32	128A03	Adapter	1	51	982-203-0	Bearing (6203)	1
14	12825K17.5	Governor Assembly	1	33	886300	Bearing (6300)	1	52	89818	Hex Wrench 1/4"	1
15	12826-A	Throttle Housing	1	34	128A05	Pinion	1	53	88124	Hex Wrench (4 mm)	1
16	12826-B	Housing	1	35	128A06	Screw	1				
17	12826AL-C	Rear Silencer	1	36	128A07	Gear Oil Plate	1				
18	12826-E	O-Ring (AS026)	1	37	HK1212	Bearing (HK1212)	1				
19	12827	Felt	1	38	128A09	Wick	1				

FOOTNOTES

EAGLE GROUP
A Division of ARMOCO
10000 SE PINE
PORTLAND, OR 97216
503-254-6600
FAX 503-255-2615

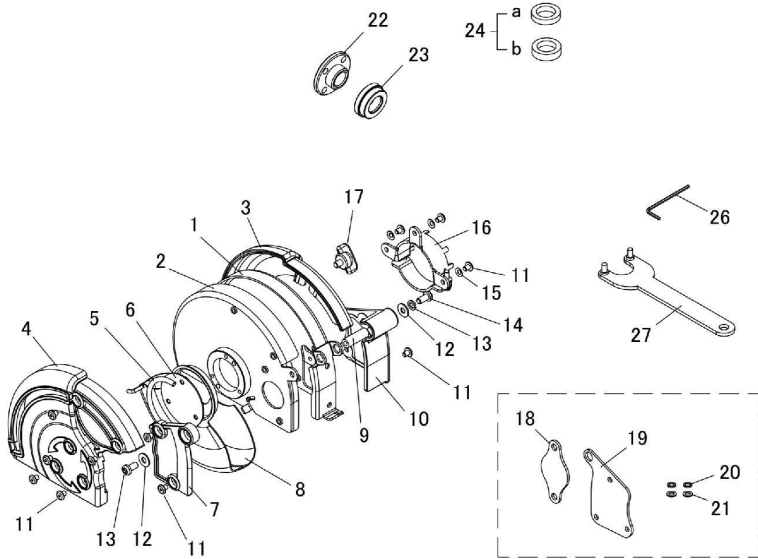
When ordering spare parts, please specify tool type, part number, and description

REVISED 01/14

ECOGRDSB ECO GUARD

FOR 5G-10125 BACK GOUGING PNEUMATIC SAW

EXPLODED VIEW



PARTS LIST — FOR REFERENCE ONLY

Index Number	Part Number	Description	Qty.	Index Number	Part Number	Description	Qty.	Index Number	Part Number	Description	Qty.
1	500054	Main Guard-A	1	13	500018	Spring Washer M5	1	24a	500047	Spacer (T4.0)	1
2	500055	Main Guard-B	1	14	500017	Screw M5 x 10	1	24b	500012	Spacer (T5.0)	1
3 & 4	500056	Protector Assembly	1	15	500021	Taper Washer	3	26	500024	Hex Wrench	1
5	500057	Spring	1	16	SB5004	Collar	1	27	210105	Pin Wrench	1
6	500058	Holder Plate	1	17	500049	Knob Bolt (M5/White)	1		N300161	Support Plate	1
7	500059	Side Protector-A	1	18	500063	Side Plate-A	1				
8	500061	Safety Guard Assembly	1	19	500064	Side Plate-B	1				
9	500062	Sleeve	1	20	500065	Spring Washer M4	2				
10	500060	Side Protector-B	1	21	500066	Washer M4	2				
11	500020	Flat Head Screw M4 x 5	13	22	500067	Lock Nut	1				
12	500019	Washer M5	2	23	500068	Inner Flange	1				

FOOTNOTES



10000 SE PINE
PORTLAND, OR 97216
503-254-6600
FAX 503-255-2615

When ordering spare parts, please specify
tool type, part number, and description

REVISED 10/15



10000 SE PINE STREET · PORTLAND,
OREGON 97216
PHONE: 1-800-852-1368

VISIT US AT: WWW.EAGLE-GROUP.COM